

Slag pots

AFS Sedan offers **various forms and many models** of slag pots manufactured in **lamellar or nodular cast iron**. The iron grade is adapted to the use.

Maximum weight: 45 tons.

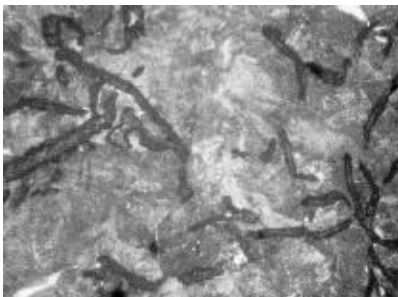
We manufacture slag pots feet of various shapes ensuring their stability.

Our research department can design or modify the slag pots forms or profiles according to customer requirements.

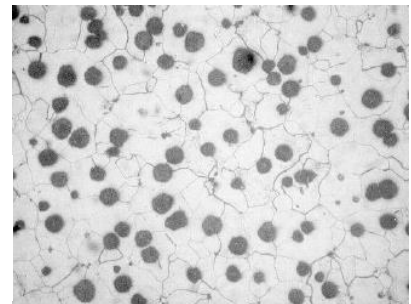
Controls and finishing:

During their finishing process, the slag pots are subject to several controls:

- Ultrasonic testing of the internal iron health,
- Mechanical characteristics tests,
- Dimensional controls,
- Measurement of the thickness by ultrasounds in different places on the pieces.



Lamellar cast iron
and pearlitic matrix
micrograph



Spheroidal cast iron
and ferritic matrix
micrograph





Advanced **F**oundry **S**ervices Sedan SAS

BP 70311

Route départementale 29

08200 GLAIRE

E-mail: contact@afs-sedan.com

Web site: www.afs-sedan.com

