

Pinch rolls

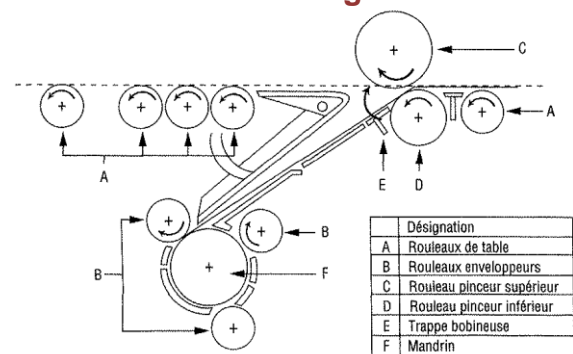
AFS Sedan has a long experience in pinch rolls production.

The superior roll is **bimetallic and spun cast** and the inferior roll is **forged**.

We offer you several dimensions:

Superior pinch roll:

- Useful thickness : 15 mm in radius
- Envelop : 50 mm in bimetallic cast iron
- Roll diameter of about 900 mm
- Length from 1,800 mm to 2,400 mm



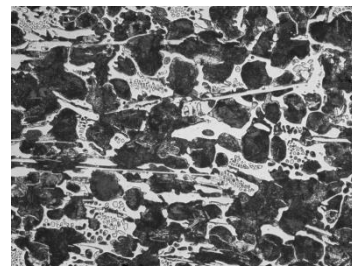
Inferior pinch roll:

- Effective thickness : 15 mm in radius
- Roll diameter of about 400 mm
- Length from 1,800 mm to 2,400 mm



URCROMAC 75SC

High chrome steel
Barrel microstructure x 100



URSEP

Nodular pearlitic Iron
Barrel microstructure x 200



Advanced Foundry Services Sedan SAS

BP 70311

Route départementale 29

08200 GLAIRE

E-mail: contact@afs-sedan.com

Web site: www.afs-sedan.com

